



Fiberglass Pressure Tank



Nanotec FRP pressure tanks are designed and manufactured for water filter and water softening applications. Tanks are complied with NSF/ANSI standard and suitable used for drinking water purpose.

General Features

- Blow molded Polyethylene inner liners.
- FRP with epoxy resin reinforced outer shell.
- Product diameters range from 8" to 63" with various heights for selection.

Design Standard

- Fatigue test: 100,000 cycles
- Burst test: >4X operating pressure
- Wetted Materials are complied with FDA regulation 21 CFR 177.15 20 and safe for drinking water applications.

Operating Conditions

Operating Pressure: 150 psi (10 bar)

Operating temp range: 34 - 122°F (1 - 50°C)

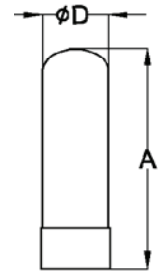
Limited Warranty

One (1) year limited warranty is provided to each tank from the date of manufacturing.

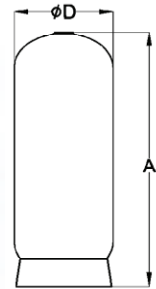
Nanotec FRP pressure vessels are designed for residential, commercial and in water treatment application.

High Quality

Size	Opening (2)		Volume		Base (1)	Dimensions (mm)		
	Top	Btm	L	Cu. Ft.		A	C	D (Ø)
FT0942	2.5"	/	38.4	1.36	S	1080	/	232
FT1044	2.5"	/	50.3	1.78	S	1145	/	261
FT1054	2.5"	/	62.9	2.22	S	1395	/	261
FT1354	2.5"	/	100.0	3.53	S	1380	/	335
FT1665	2.5"	/	193.4	6.83	S	1643	/	415
FT1665-4	4"	/	193.4	6.83	S	1643	/	415
FT1865-4D	4"	4"	223	8.2	T	1830	230	457
FT2162-4D	4"	4"	316	11.2	T	1760	180	540
FT2472-4D	4"	4"	434	15.3	T	1920	230	612
FT3072-4D	4"	4"	621	21.9	T	1940	220	762
FT3672-4D	4"	4"	1024	36.2	T	2200	370	912
FT4272-6D	6"	6"	1366	48.2	T	2260	300	1050
FT4872-6D	6"	6"	1875	66.2	T	2200	290	1215
FT6386-6D	6"	6"	3310	112.31	T	2570	410	1617



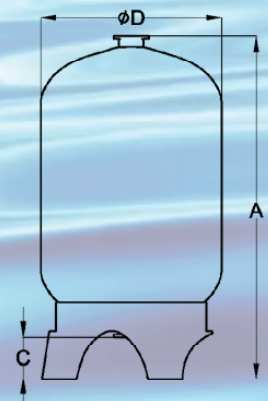
8" - 16"
2.5" 8-NPSM
Top opening,
Standard base



14" - 36",
4" 8-UN
Top opening,
Standard



18" - 36",
4" 8-UN
Top & Bottom,
Tripod base



36" - 63",
6" Flange
Top & Bottom,
Tripod base

Remarks:

1. S – Standard Base; T – Tripod Base; Btm - bottom
2. 2.5" inlet is 8-NPSM; 4" inlet – 8-UN; 6" - Flange
3. All Tanks are completed with PE liner. All dimensions are for reference only and subjected to change without notice.

VACUUM BREAKER VALVE INSTALLATION GUIDE

